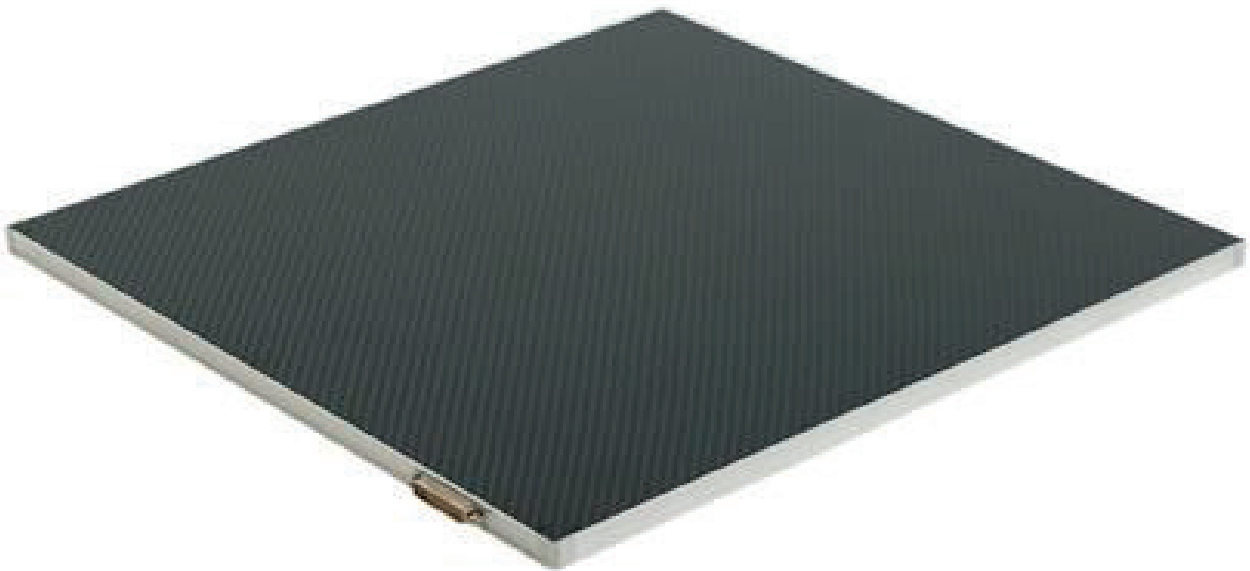


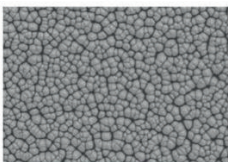
FLAT PANEL DETECTOR

CRONO DRX 4343 TH



High performance & Low dose

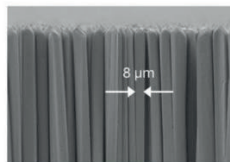
- Advanced in-house technology which is cultivated in long history and experience
- X-ray Scintillator produced by the optimum process control for Flat panel Detector
- The technology enables high performance & low dose



Superstructure (Top view)

High performance & Low dose

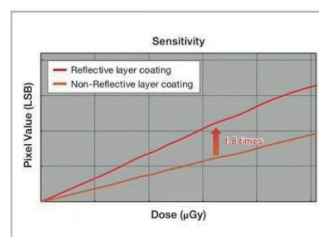
- Fine CsI:Tl structure on Photodiode/TFT board manufactured by advanced process control
- The technology enables high performance & low dose



Superstructure (Side view)

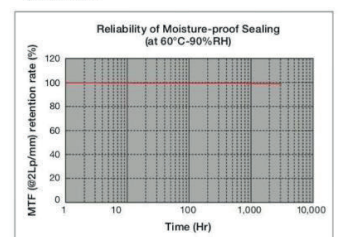
High sensitivity & Low dose

- 1.8 times sensitivity against Non-Reflective layer coating
- The technology enables high sensitivity & low dose



Long life & Stable high performance

- High reliability is achieved by advanced sealing
- The technology enables long life & stable high performance



Leader nella qualità dell'immagine digitale

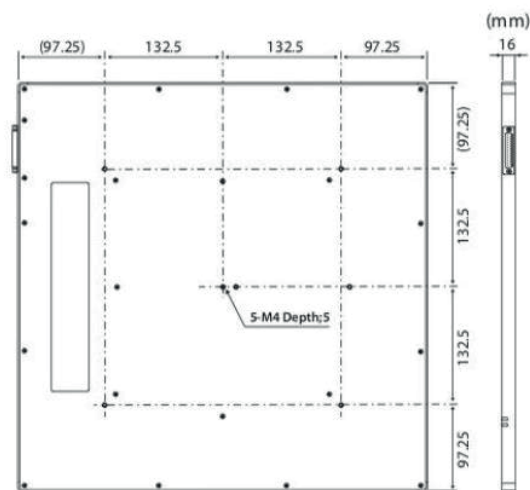
I nostri flat panel (FPDs) per la radiologia veterinaria possiedono:

- Alta sensibilità**
- ottima risoluzione**
- basso rumore di fondo**

essi producono **ottime immagini** riducendo la **dose di raggi**.

FPDs offrono un nuovo livello di **funzionalità** e di **affidabilità** per l'acquisizione delle immagini.

- Configurazione DR system con minimo sforzo
- Eccellente qualità dell'immagine
- Avanzato AED system che semplifica la configurazione del sistema

Dimensions

CARATTERISTICHE TECNICHE		DRX 4343 TH
Applicazione		Radiografie
Tecnologia		QUADCEL technology
TFT		TFT array + photodiode (a-Si)
Dimensione del pixel		140 µm
Area attiva		43(H) x 43(V) cm (17 x 17 inches)
Pixel attivi		Matrix 3040 (H) x 3036 (V)
A/D conversione		16 bits
Acquisizione		2 secondi
Ambiente	operation	10 a 35 °C
	storage	10 a 85% RH (non-condensing) -20 a 70 °C 10 a 90% RH (non-condensing)
Dimensioni		460 x 460 x 16 mm
Peso (approssimato)		4.3 Kg
Altre caratteristiche		Doppia esposizione
AED		Disponibile